



## Easy Chess Puzzle # 0128

By

G Bud Games  
<https://gbud.in>

February 5, 2022

## Contents

|   |          |
|---|----------|
| <b>Easy Chess puzzle # 0128 - Mate in 1 move</b>                  | <b>3</b> |
| Easy chess puzzle 0128 . . . . .                                  | 3        |
| Solution to easy chess puzzle 0128 . . . . .                      | 4        |
| Solution 1 . . . . .  | 4        |
| Right moves for the solution to the easy chess puzzle 0128        | 6        |
| Explanation for the moves . . . . .                               | 6        |
| Categories of easy chess puzzle 0128 . . . . .                    | 6        |
| easy chess puzzle 0128 chart . . . . .                            | 7        |
| How to view the solution to easy chess puzzle 0128 . . . . .      | 9        |
| How to get help for moves in the easy chess puzzle 0128 . . . . . | 10       |
| Play chess for free . . . . .                                     | 11       |

## List of Figures

|    |   |    |  |
|----|---|----|--|
| 1  | Solve this easy chess puzzle 0128. Mate in 1 move @ <a href="https://gbud.in/gl2nl41">https://gbud.in/gl2nl41</a> . . . . . | 3  |  |
| 2  | Solve this chess puzzle online with solution @ <a href="https://gbud.in/gl2nl41">https://gbud.in/gl2nl41</a> . . . . .      | 3  |  |
| 3  | Initial board position of easy chess puzzle 0128 . . . . .  | 4  |  |
| 4  | b5 . . . . .  | 5  |  |
| 5  | Qxf7# . . . . .   | 5  |  |
| 6  | easy chess puzzle 128 chart 1 . . . . .   | 7  |  |
| 7  | easy chess puzzle 128 chart 2 . . . . .   | 8  |  |
| 8  | easy chess puzzle 128 chart 3 . . . . .   | 8  |  |
| 9  | easy chess puzzle 128 chart 4 . . . . .   | 9  |  |
| 10 | Click the solution button to view solutions @ <a href="https://gbud.in/gl2nl41">https://gbud.in/gl2nl41</a> . . . . .       | 9  |  |
| 11 | Click the help button to get help on next move @ <a href="https://gbud.in/gl2nl41">https://gbud.in/gl2nl41</a> . . . . .    | 10 |  |
| 12 | Solve more easy puzzles @ <a href="https://gbud.in/chsezpz">https://gbud.in/chsezpz</a> . . . . .                           | 10 |  |
| 13 | Solve other puzzles @ <a href="https://gbud.in/chsgppz">https://gbud.in/chsgppz</a> . . . . .                               | 10 |  |
| 14 | Play chess online for free. Solve puzzles and play with friends   | 11 |  |
| 15 | Solve this puzzle online by scanning this QR code or go to the link below . . . . .   | 12 |  |

## Easy Chess puzzle # 0128 - Mate in 1 move

Solve this easy chess puzzle and improve your chess games through improvement of your chess strategies and chess tactics.

Puzzle No : 0128

Difficulty level : Easy

Description : Mate in 1 move

Next Move : White

Player level : Beginner

Short URL for puzzle : <https://gbud.in/gl2nl41>

### Easy chess puzzle 0128

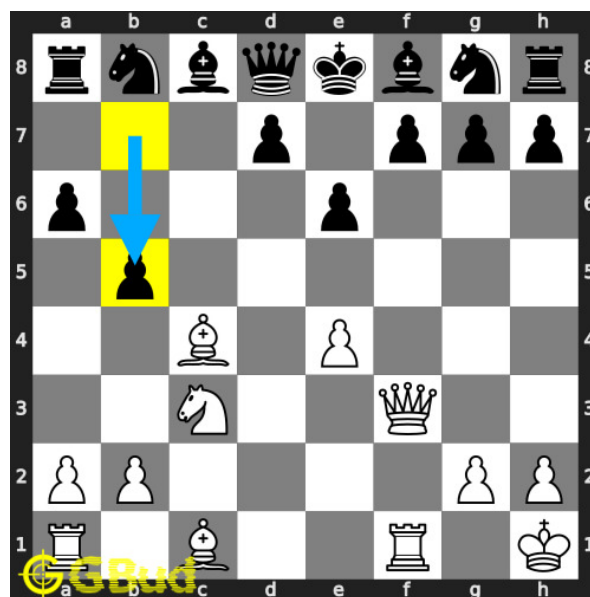


Figure 1: Solve this easy chess puzzle 0128. Mate in 1 move @ <https://gbud.in/gl2nl41>



Figure 2: Solve this chess puzzle online with solution @ <https://gbud.in/gl2nl41>

Dont forget to check out [chess puzzles](#), [easy chess puzzles](#), [medium chess puzzles](#), [hard chess puzzles](#) and [chess puzzles collections](#) .

## Solution to easy chess puzzle 0128

At this puzzle, next **move** is by **White**. The objective of the puzzle is to mate in 1 move.

See the interactive solution at the [puzzle page](#)

### Solution 1

**Initial board position** This is the initial board position of easy chess puzzle 0128.

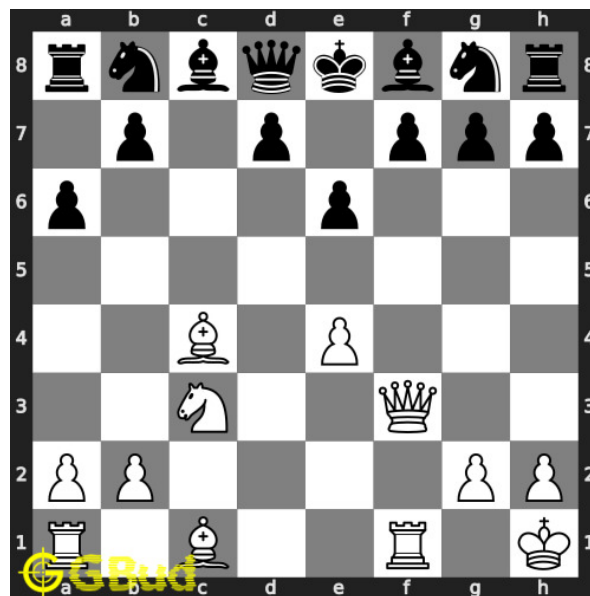


Figure 3: Initial board position of easy chess puzzle 0128

**Move 1** Move by black

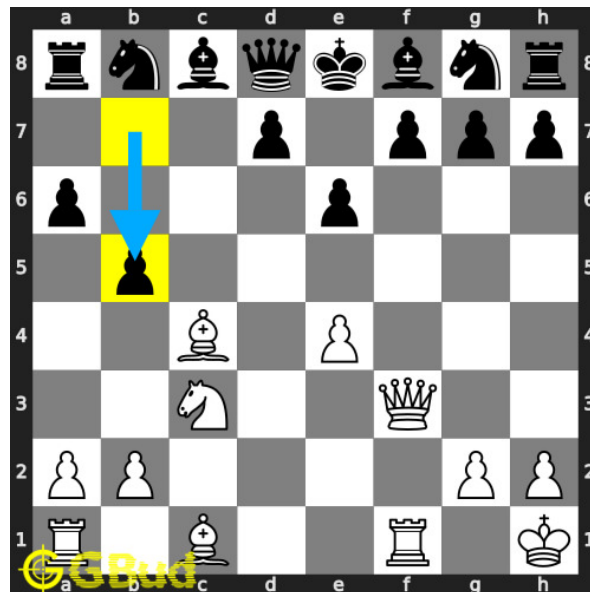


Figure 4: b5

opponent's **pawn** threatens your **bishop**.

**Move 2** Move by white

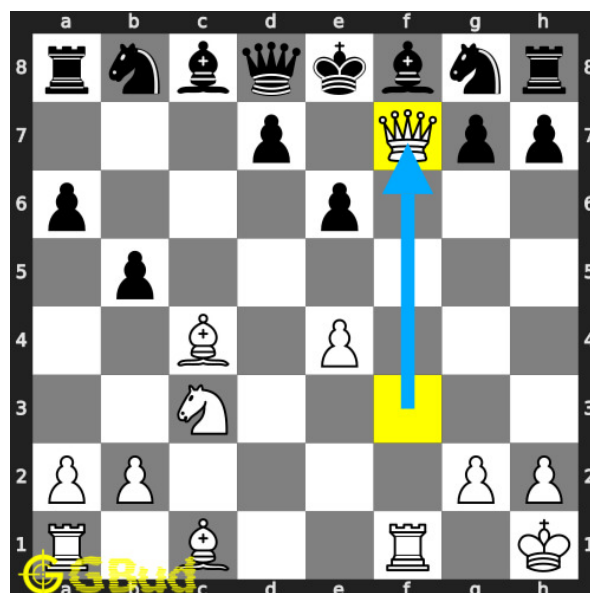


Figure 5: Qxf7#

your **queen** from the **battery** formation **captures** opponent's **pawn** and **checkmate**. opponent's **king** does not have any free **squares** as it is blocked by **queen**. this is how you can **mate** in 1 **move**.

## Right moves for the solution to the easy chess puzzle 0128

Based on the objective of the puzzle, you have to make the right moves. Following are the right moves

1. Qxf7#

## Explanation for the moves

1. b5 - Opponent's pawn threatens your bishop.
2. Qxf7# - Your queen from the battery formation captures opponent's pawn and checkmate. Opponent's king does not have any free squares as it is blocked by queen. This is how you can mate in 1 move.
3. For right move - Your queen move was fantastic. Keep up the good work
4. For wrong move - You should have moved your queen to have a checkmate. Try again

## Categories of easy chess puzzle 0128

This easy chess puzzle falls in these categories.

1. [Easy chess puzzles](#)
2. [Mate in 1 puzzles in chess](#)
3. [Endgame puzzles in chess](#)
4. [Battery puzzles in chess](#)
5. [Strategy puzzles in chess](#)
6. [Queen puzzles in chess](#)

## easy chess puzzle 0128 chart



Figure 6: easy chess puzzle 128 chart 1



Figure 7: easy chess puzzle 128 chart 2



Figure 8: easy chess puzzle 128 chart 3



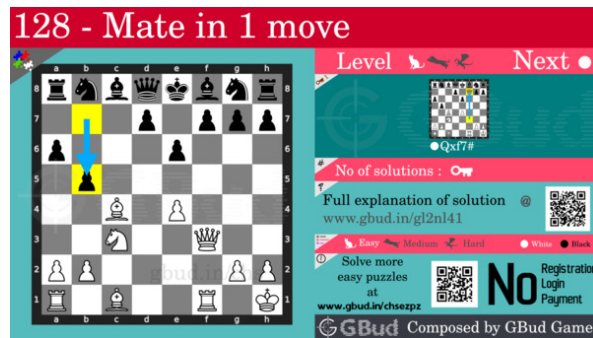


Figure 9: easy chess puzzle 128 chart 4

## How to view the solution to easy chess puzzle 0128

To view the [solution to this puzzle](https://gbud.in/blog/game/chess/easy-chess-puzzles/easy-chess-puzzle-0128.html), follow the steps given below

1. Go to the [puzzle page](https://gbud.in/blog/game/chess/easy-chess-puzzles/easy-chess-puzzle-0128.html)
2. Click the solution button (Key as shown [below](https://gbud.in/blog/game/chess/easy-chess-puzzles/easy-chess-puzzle-0128.html)) to view the solution



Figure 10: Click the solution button to view solutions @ <https://gbud.in/gl2nl41>

## How to get help for moves in the easy chess puzzle 0128

To get help or the possible next moves in the puzzle, , follow the steps given below

1. Go to the [puzzle page](#)
2. Click the help button (exclamation mark as shown [below](#)) to get help or suggestion on next possible [move](#)



Figure 11: Click the help button to get help on next move @ <https://gbud.in/gl2nl41>



Figure 12: Solve more easy puzzles @ <https://gbud.in/chsezpz>



Figure 13: Solve other puzzles @ <https://gbud.in/chsgppz>

## Play chess for free

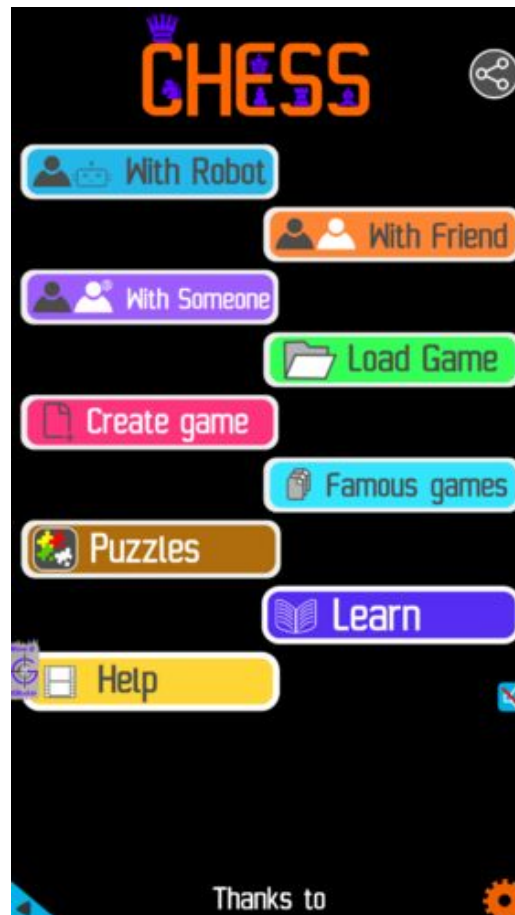


Figure 14: Play chess online for free. Solve puzzles and play with friends

Play chess for free at <https://gbud.in/chs>

We present you a platform to play chess online with friends for free. No need to install any app. You can play chess for free without registration or login.

Simple. You can do several chess related activities.

1. [solve chess puzzles](#)
2. [learn about chess](#)
3. [play chess with computer](#)
4. [play chess with friend](#)
5. [create your own chess games](#)

6. [fen viewer](#)
7. [fen editor](#)
8. [fen generator](#)
9. [pgn viewer](#)
10. [chess board editor](#)
11. [view famous chess games.](#)



Figure 15: Solve this puzzle online by scanning this QR code or go to the link below

<https://gbud.in/gl2nl41>

Read the latest article on Easy Chess puzzle # 0128 - Mate in 1 move by scanning this QR code or click the link

Previous article : [« Easy Chess puzzle # 0127 - Opponent missed a checkmate. What will you do](#)

Next article : [Easy chess puzzles »](#)

[Back to top](#)

[Contact Us](#)